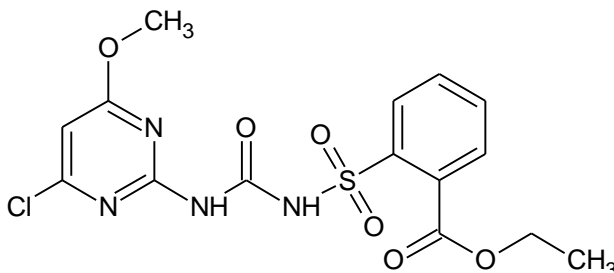


Synonyms

Chlorimuron-ethyl 25% WP;
Ethyl 2-[[[(4-chloro-6-methoxypyrimidin-2-yl)carbonyl]sulfonyl]benzoate];
2-[[[[[(4-chloro-6-methoxy-2-pyrimidinyl)amino]-carbonyl]amino]sulfonyl]benzoic acid ethyl ester

Chemical structure and identity

Molecular formula	C ₁₅ H ₁₅ ClN ₄ O ₆ S
Molecular weight	414.8
CAS number	90982-32-4
PRD number	AG406340

Specifications

Appearance	Off-white powder
Chlorimuron-ethyl content	25% minimum
Wettability	120 seconds maximum
Wet sieve test (75μ sieve)	99% minimum
Suspensibility	60% minimum
Acidity	0.4% maximum

Physical properties

Solubility in water	Forms suspension
pH (1% solution)	5 to 7

Description

CYNO is an off-white powder.

Applications

CYNO is herbicide of the sulfonylurea group used for selective, systemic and post-emergence control of weeds in transplanted paddy and soybean. The product works at a low dosage of 15 g/acre and effectively controls most major broad-leaved weeds and sedges in soybean.

Packaging

CYNO is available in 15 g pack in HDPE bottles and 25 kg fiberboard drums. Other packaging may be considered on request.

Storage and handling

Keep containers tightly closed and store at ambient temperature. Store containers away from heat, direct sunlight and oxidising | reducing agents. Control dust formation. Avoid contact with eyes, skin or clothing. Keep out of reach of children. Always refer to the Safety Data Sheet (SDS) for detailed information on storage and handling.

Safety	Wear protective gloves, a dust mask and goggles. Keep material away from foodstuffs, beverages and feed. Wash hands thoroughly after handling this product. Do not inhale its dust, smoke or mist. Always refer to the SDS for detailed information on safety.
First aid	<p>Eye contact: Rinse eyes in open position for several minutes with plenty of water. Consult a physician immediately.</p> <p>Skin contact: Wash the affected area thoroughly with soap and water. Remove clothing contaminated by the product. Consult a physician immediately.</p> <p>Ingestion: Avoid ingestion as the product is harmful. If swallowed, induce vomiting by tickling back of the throat. Repeat it until the vomitus is clear. Consult a physician immediately.</p> <p>Inhalation: Avoid inhalation as the product is harmful. Shift the affected person to fresh air. In case of irregular breathing or respiratory arrest, provide artificial respiration. Consult a physician immediately on suspicion of intoxication.</p>
Spills and disposal	In case of a spill, collect the spilled material mechanically and keep in a container for subsequent disposal. Avoid formation of dust. Do not allow the spilled material to enter sewers, surface or groundwater. Dispose of the contents container(s) in accordance with local, regional, national or international regulations guidelines, as applicable.
Contact	E-mail: crop_care@atul.co.in Website: www.atul.co.in
Note	CYNO® is a registered trade mark for Chlorimuron-ethyl 25% WP which belongs to Atul Ltd.