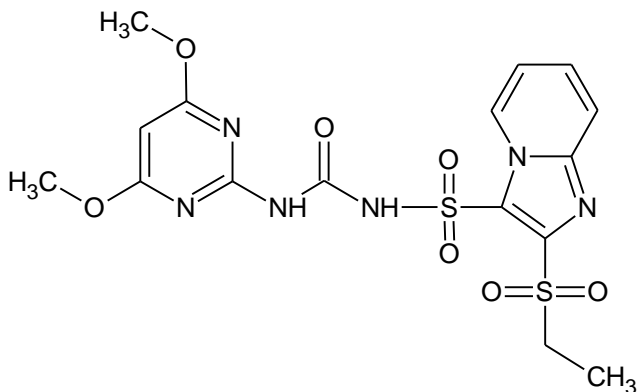


**Synonyms**

Sulfosulfuron 75% WDG;  
 1-(4,6-dimethoxypyrimidin-2-yl)-3-(2-ethylsulfonylimidazo[1,2-a]pyridin-3-yl)sulfonylurea;  
 N-[[[(4,6-dimethoxy-2-pyrimidinyl)amino]carbonyl]-2-(ethylsulfonyl)imidazo[1,2-a] pyridine-3-sulfonamide

**Chemical structure and identity**



Molecular formula	C <sub>16</sub> H <sub>18</sub> N <sub>6</sub> O <sub>7</sub> S <sub>2</sub>
Molecular weight	470.48
CAS number	141776-32-1
PRD number	AG408490

**Specifications**

Appearance	Off-white to beige coloured granules
Sulfosulfuron content	75% minimum
Wettability	60 seconds maximum
Wet sieve test (75µ sieve)	98% minimum
Suspensibility	60% minimum
Dust content	1% maximum

**Physical properties**

Density	0.54 g/cm <sup>3</sup>
pH (10 g/L solution)	4.9 at 20°C

**Description**

LOXO is an off-white to beige coloured granules.

**Applications**

LOXO is herbicide of the sulfonylurea group for post-emergence control of weeds like phalaris minor, chenopodium species and melilotus alba in wheat.

**Packaging**

LOXO is available in 13.5 g trilaminate pouches with adjuvant and 25 kg fiberboard drums. Other packaging may be considered on request.

**Storage and handling**

Keep containers tightly closed and store at ambient temperature. Store containers away from heat, direct sunlight and oxidising | reducing agents. Avoid contact with eyes, skin or clothing. Keep out of reach of children. Always refer to the Safety Data Sheet (SDS) for detailed information on storage and handling.

<b>Safety</b>	Wear protective gloves, a dust mask and goggles. Keep material away from foodstuffs, beverages and feed. Wash hands thoroughly after handling this product. Do not inhale its dust, smoke or mist. Always refer to the SDS for detailed information on safety.
<b>First aid</b>	<p><b>Eye contact:</b> Rinse eyes in open position for several minutes with plenty of water. Consult a physician immediately.</p> <p><b>Skin contact:</b> Wash the affected area thoroughly with soap and water. Remove clothing contaminated by the product. Consult a physician immediately.</p> <p><b>Ingestion:</b> Avoid ingestion as the product is harmful. Induce vomiting by giving a tablespoon of salt dissolved in a glass of warm water and repeat until vomitus is clear. Consult a physician immediately.</p> <p><b>Inhalation:</b> Avoid inhalation as the product is harmful. Shift the affected person to fresh air. In case of irregular breathing or respiratory arrest, provide artificial respiration. Consult a physician immediately on suspicion of intoxication.</p>
<b>Spills and disposal</b>	In case of a spill, collect the spilled material mechanically and keep in a container for subsequent disposal. Avoid formation of dust. Do not allow the spilled material to enter sewers, surface or groundwater. Dispose of the contents   container(s) in accordance with local, regional, national or international regulations   guidelines, as applicable.
<b>Contact</b>	E-mail: <a href="mailto:crop_care@atul.co.in">crop_care@atul.co.in</a> Website: <a href="http://www.atul.co.in">www.atul.co.in</a>
<b>Note</b>	LOXO® is a registered trade mark for Sulfosulfuron 75% WDG which belongs to Atul Ltd.