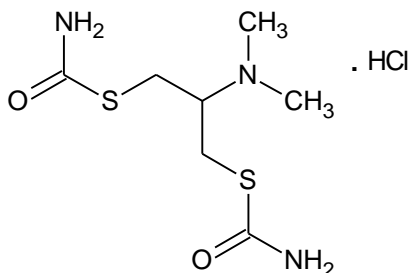


**Synonyms**

Cartap hydrochloride 4% GR;  
 Carbamothioic acid, S,S'-[2-(dimethylamino)-1,3-propanediyl]ester hydrochloride;  
 1,3-Bis(carbamoylthio)-2-N,N-(dimethylamino)propane hydrochloride

**Chemical structure and identity**

Molecular formula	C <sub>7</sub> H <sub>16</sub> ClN <sub>3</sub> O <sub>2</sub> S <sub>2</sub>
Molecular weight	273.8
CAS number	15263-53-3
PRD number	CART1129
EINECS number	239-309-2

**Specifications**

Appearance	Bluish-green granules
Cartap hydrochloride content	4% minimum
Material insoluble in water	4% maximum
pH (10% solution)	3.0 to 4.5

**Physical properties**

Solubility in water	Soluble
Melting point of technical	179°C to 181°C

**Description**

CAPSI is a bluish-green granules.

**Applications**

CAPSI is used as agricultural insecticide to control chewing and sucking insects of rice, vegetables and many other crops.

**Packaging**

CAPSI is available in 500 g to 5 kg trilaminate pouches. Other packaging may be considered on request.

**Storage and handling**

Keep containers tightly closed and store in a cool, dry and well-ventilated area. Do not store along with oxidising and acidic materials. Control dust formation. Avoid exposure to eyes, skin or clothing. Keep out of reach of children. Always refer to the Safety Data Sheet (SDS) for detailed information on storage and handling.

**Safety**

Wear protective gloves, a dust mask and goggles. Keep material away from foodstuffs, beverages and feed. Wash hands thoroughly after handling this product. Do not inhale its dust, smoke or mist. Always refer to the SDS for detailed information on safety.

<b>First aid</b>	<p><b>Eye contact:</b> Rinse eyes in open position for several minutes with plenty of water. Consult a physician immediately.</p> <p><b>Skin contact:</b> Immediately wash the affected area thoroughly with soap and water. Remove contaminated clothing. Consult a physician.</p> <p><b>Ingestion:</b> Avoid ingestion as the product is toxic and harmful. Induce vomiting. Consult a physician immediately.</p> <p><b>Inhalation:</b> Avoid ingestion as the product is toxic and harmful. Shift the affected person to fresh air. In case of irregular breathing or respiratory arrest, provide artificial respiration. Consult a physician immediately on suspicion of intoxication.</p>
<b>Spills and disposal</b>	<p>In case of a spill, collect the spilled material mechanically and keep in a container for subsequent disposal. Avoid formation of dust. Do not allow the spilled material to enter sewers, surface or groundwater. Dispose of the contents   container(s) in accordance with local, regional, national or international regulations   guidelines, as applicable.</p>
<b>Contact</b>	<p>E-mail: <a href="mailto:crop_care@atul.co.in">crop_care@atul.co.in</a> Website: <a href="http://www.atul.co.in">www.atul.co.in</a></p>
<b>Note</b>	<p>CAPSI® is a registered trade mark for Cartap hydrochloride 4% GR which belongs to Atul Ltd.</p>