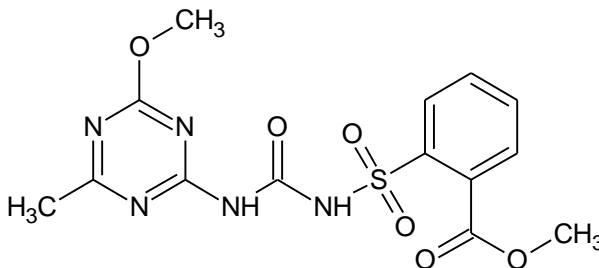


## Synonyms

Metsulfuron-methyl 20% WP;  
Methyl 2-[[[(4-methoxy-6-methyl-1,3,5-triazin-2-yl)carbamoyl]sulfamoyl] benzoate;  
Methyl-2-[[[[[(4-methoxy-6-methyl-1,3,5-triazin-2-yl)-amino]-carbonyl]-amino]sulfonyl]-benzoate

## Chemical structure and identity



Molecular formula	C <sub>14</sub> H <sub>15</sub> N <sub>5</sub> O <sub>6</sub> S
Molecular weight	381.40
CAS number	74223-64-6
PRD number	AG452690

## Specifications

Appearance	Off-white to beige coloured powder
Metsulfuron-methyl content	20% minimum
Wettability	120 seconds maximum
Wet sieve test (75µ sieve)	98% minimum
Suspensibility	60% minimum

## Physical properties

Solubility	Forms suspension in water
pH (10 g/L in water)	5 to 7

## Description

CONVO is an off-white to beige coloured powder.

## Applications

CONVO is herbicide of the sulfonylurea group for post-emergence control of broad-leaved weeds in paddy, wheat and sugarcane.

## Packaging

CONVO is available in 8 g pack in HDPE bottles and trilaminate pouches with surfactant and 25 kg fiberboard drums. Other packaging may be considered on request.

## Storage and handling

Keep containers tightly closed and store at ambient temperature. Store containers away from heat, direct sunlight and oxidising | reducing agents. Avoid contact with eyes, skin or clothing. Keep out of reach of children. Always refer to the Safety Data Sheet (SDS) for detailed information on storage and handling.

## Safety

Wear a self-contained breathing apparatus, if necessary. Wear protective gloves, a dust mask and safety goggles. Keep material away from foodstuffs, beverages and feed. Wash hands thoroughly after handling this product. Always refer to the SDS for detailed information on safety.

**First aid**

**Eye contact:** Rinse eyes in open position for several minutes with plenty of water. Consult a physician immediately.

**Skin contact:** Wash the affected area thoroughly with soap and water. Remove clothing contaminated by the product. Consult a physician immediately.

**Ingestion:** Avoid ingestion as the product is harmful. Induce vomiting by tickling back of the throat. Repeat it until vomitus is clear. Consult a physician immediately.

**Inhalation:** Avoid inhalation as the product is harmful. Shift the affected person to fresh air. In case of irregular breathing or respiratory arrest, provide artificial respiration. Consult a physician immediately on suspicion of intoxication.

**Spills and disposal**

In case of a spill, collect the spilled material mechanically and keep in a container for subsequent disposal. Avoid formation of dust. Do not allow the spilled material to enter sewers, surface or groundwater. Dispose of the contents | container(s) in accordance with local, regional, national or international regulations | guidelines, as applicable.

**Contact**

E-mail: [crop\\_care@atul.co.in](mailto:crop_care@atul.co.in)

Website: [www.atul.co.in](http://www.atul.co.in)

**Note**

CONVO® is a registered trade mark for Metsulfuron-methyl 20% WP which belongs to Atul Ltd.