

Synonyms

Metsulfuron-methyl 10% + Chlorimuron-ethyl 10% WP;

Metsulfuron-methyl:

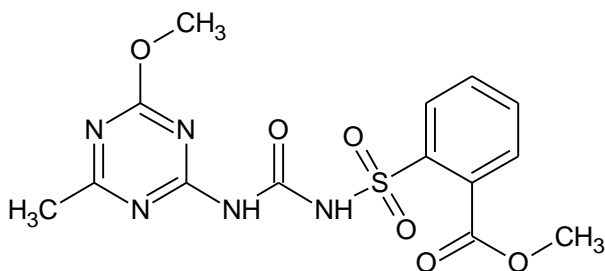
Methyl 2-[[[(4-methoxy-6-methyl-1,3,5-triazin-2-yl)carbamoyl]sulfamoyl] benzoate;
Methyl-2-[[[[[(4-methoxy-6-methyl-1,3,5-triazin-2-yl)-amino]-carbonyl]-amino]sulfonyl]-benzoate

Chlorimuron-ethyl:

Ethyl 2-[[[(4-chloro-6-methoxypyrimidin-2-yl)carbamoyl]sulfamoyl]benzoate;
2-[[[[[(4-chloro-6-methoxy-2-pyrimidinyl)amino]-carbonyl]amino]sulfonyl]benzoic acid ethyl ester

Chemical structure and identity

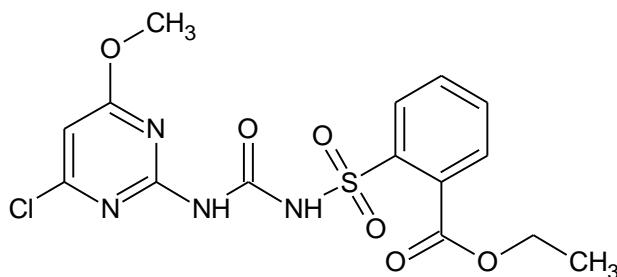
Metsulfuron-methyl



Molecular formula
Molecular weight
CAS number

C₁₄H₁₅N₅O₆S
381.40
74223-64-6

Chlorimuron-ethyl



Molecular formula
Molecular weight
CAS number

C₁₅H₁₅ClN₄O₆S
414.80
90982-32-4

Specifications

Appearance	Off-white to beige coloured powder
Metsulfuron-methyl content	10% minimum
Chlorimuron-ethyl content	10% minimum
Wettability	98% minimum
Wet sieve test (75µ sieve)	60% minimum
Suspensibility	120 seconds maximum

Physical properties	Solubility in water pH (10 g/L in water)	Form suspension 7.0 to 8.5
Description	RYMIX is an off-white to beige coloured powder.	
Applications	RYMIX is herbicide of the sulfonylurea group used to control sedges and broad-leaved weeds in paddy.	
Packaging	RYMIX is available in 8 g pack in HDPE bottles and 25 kg fiberboard drums. Other packaging can be considered on request.	
Storage and handling	Keep containers tightly closed and store at ambient temperature. Store containers away from heat, direct sunlight and oxidising reducing agents. Avoid contact with eyes, skin or clothing. Keep out of reach of children. Always refer to the Safety Data Sheet (SDS) for detailed information on storage and handling.	
Safety	Wear a self-contained breathing apparatus, if necessary. Wear protective gloves, a dust mask and safety goggles. Keep material away from foodstuffs, beverages and feed. Wash hands thoroughly after handling this product. Always refer to the SDS for detailed information on safety.	
First aid	<p>Eye contact: Rinse eyes in open position for several minutes with plenty of water. Consult a physician immediately.</p> <p>Skin contact: Wash the affected area thoroughly with soap and water. Remove clothing contaminated by the product. Consult a physician immediately.</p> <p>Ingestion: Avoid ingestion as the product is harmful. Induce vomiting by giving a tablespoon of salt dissolved in a glass of warm water and repeat until vomit fluid is clear. Consult a physician immediately.</p> <p>Inhalation: Avoid inhalation as the product is harmful. Shift the affected person to fresh air. In case of irregular breathing or respiratory arrest, provide artificial respiration. Consult a physician immediately on suspicion of intoxication.</p>	
Spills and disposal	In case of a spill, collect the spilled material mechanically and keep in a container for subsequent disposal. Avoid formation of dust. Do not allow the spilled material to enter sewers, surface or groundwater. Dispose of the contents container(s) in accordance with local, regional, national or international regulations guidelines, as applicable.	
Contact	E-mail: crop_care@atul.co.in Website: www.atul.co.in	
Note	RYMIX® is a registered trade mark for Metsulfuron-methyl 10% + Chlorimuron-ethyl 10% WP which belongs to Atul Ltd.	

Disclaimer: The information contained herein is for information purposes only. While enough care is taken in disclosing the information, users of this information are advised to cross-check the same depending upon use | application. Atul Ltd does not give any assurance or warranty or guarantee in regard to the accuracy or completeness of the information and no claim or liability will be accepted or entertained in regard thereto. Atul Ltd makes no warranty of any kind, expressed or implied, including, but not limited to, any implied warranty of merchantability or fitness for a particular purpose or performance or usage of trade.