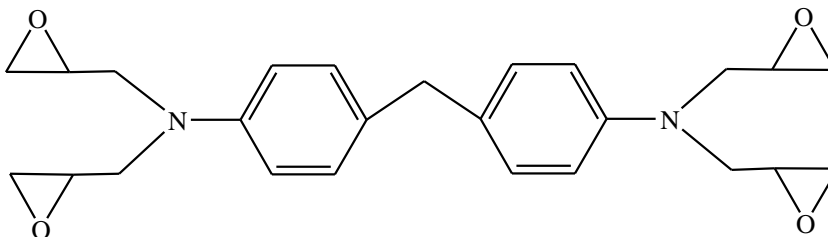


Description

Lapox ARTF-16 is an unmodified tetrafunctional, medium viscosity resin with low chlorine content. This resin provides good performance characteristics at elevated temperatures. The reactivity of this resin is comparatively faster than conventional resins with high exotherm.

Chemical structure



Advantages

- Excellent modulus even at high temperature
- Extremely high glass transition temperature
- High chemical resistance
- High retention of mechanical strength at elevated temperature
- Low viscosity for better processing
- Outstanding heat resistance

Applications

- Casting
- High performance composite components
- High performance structural adhesives
- Tooling

Typical specifications

Properties	Unit	Test method	Values
Appearance	-	Visual	Clear, brown liquid
Colour	GS	ASTM D1544	Max 12
Epoxy value	Eq/kg	ASTM D1652	7.46 - 8.55
Epoxy equivalent weight (EEW)	g/eq	ASTM D1652	117 - 134
Viscosity at 50°C	m Pas	ASTM D4287	13,000 - 15,000
Hydrolysable chlorine	%	ASTM D1726	Max 0.1

Packaging

Lapox ARTF-16 is available in 200 kg MS drums. Other packing may be considered on request.

Storage and handling

Lapox ARTF-16 must be stored between 2°C and 8°C in a sealed container. Storage at high temperature may adversely impact its properties. This resin is highly reactive and hence has a tendency to increase viscosity if stored for longer time at high temperature than recommended. Keep away from direct sunlight, warm areas, particularly near heat sources. Shelf life of this product is 1 year from the date of manufacturing. The recommended pumping temperature is between 50°C and 60°C.

LAPOX[®] ARTF-16

Technical Data Sheet | Polymers Business



Safety

Wear personal protective equipment (PPE). Avoid contact with the eyes and skin. In case of direct contact and irritation, the resin should be washed off immediately with soap and warm water. Avoid breathing vapours, mist or gas. Please refer to the Safety Data Sheet (SDS) of Lapox ARTF-16 for detailed safety instructions.

Spills and disposal

In case of spills, sweep up and shovel the spilled material. Keep spilled material in suitable, closed containers for disposal. Soak up with an absorbent such as clay, sand or other suitable material. Flush area with water to remove trace residue. Do not allow the product to reach the sewage system. Waste must be disposed of in accordance with federal, state or local regulations, as applicable.

Contact

E-mail: polymers@atul.co.in
Website: www.atul.co.in

Note

Lapox[®] is a registered trademark of Atul Ltd.

Manufacturing site

Atul 396 020, Gujarat, India
Telephone: (+91 2632) 230000 | 233261
E-mail: contact@atul.co.in

Disclaimer: The information contained herein is for information purposes only. While enough care is taken in disclosing the information, users of this information are advised to cross-check the same depending upon use | application. Atul Ltd does not give any assurance or warranty or guarantee in regard to the accuracy or completeness of the information and no claim or liability will be accepted or entertained in regard thereto. Atul Ltd makes no warranty of any kind, expressed or implied, including, but not limited to, any implied warranty of merchantability or fitness for a particular purpose or performance or usage of trade.